

CERTIFIED LAND CORNER

STATE OF WISCONSIN) S.S.  
 COUNTY OF CRAWFORD)

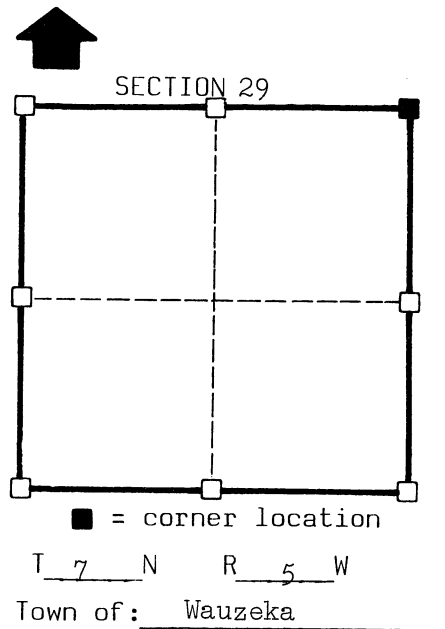
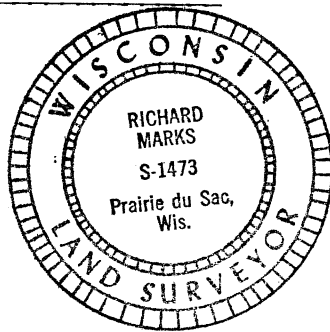
CERTIFICATE

I, Richard Marks, do hereby certify that on the 3rd day of October 1983, I found (evidence) (~~no evidence~~) of the Northeast corner of Section 29, T 7 N, R 5 W, Fourth Principal Meridian, and I re-established said corner according to the Wisconsin Statutes as shown and described hereon.

Dated this 12 day of December 1983

*Richard Marks*

Registered Land Surveyor S-1473  
 Title



Seal

History of original corner establishment:

Original survey by Orson Lyon- First and second quarter, 1840  
 J.J. Hurlbut set stone- 6" diameter X 26" long and was at corner Feb. 16 & 17, 1886  
 April 21 & 22, 1887 and Jan. 7 & 8, 1916

Description of corner evidence found:

Found stone 0.6' X 0.6' X 1.3' long- Top 8" under surface- Stone bent toward South  
 Set Harrison Monument at bottom of stone, 22" under present ground surface.  
 Excavated 4' to 7' East- 0.5' to 3' West- 12' to 15' North-  
 12 1/2' South of existing fence. Found stone further West than expected.

Description of corner and witness monuments, references and accessories used to perpetuate the original or re-established location of this corner:

Witnesses to corner location:

Richard Marks

Ron Hayden

5-1= N13°05'12"E 39.48'

5-2= S52°47'24"E 54.14'

5-3= S49°38'31"W 80.18'

5-4= N45°54'06"W 83.93'

1-2= S25°38'42"E 78.97'

2-3= S79°34'18"W 105.96'

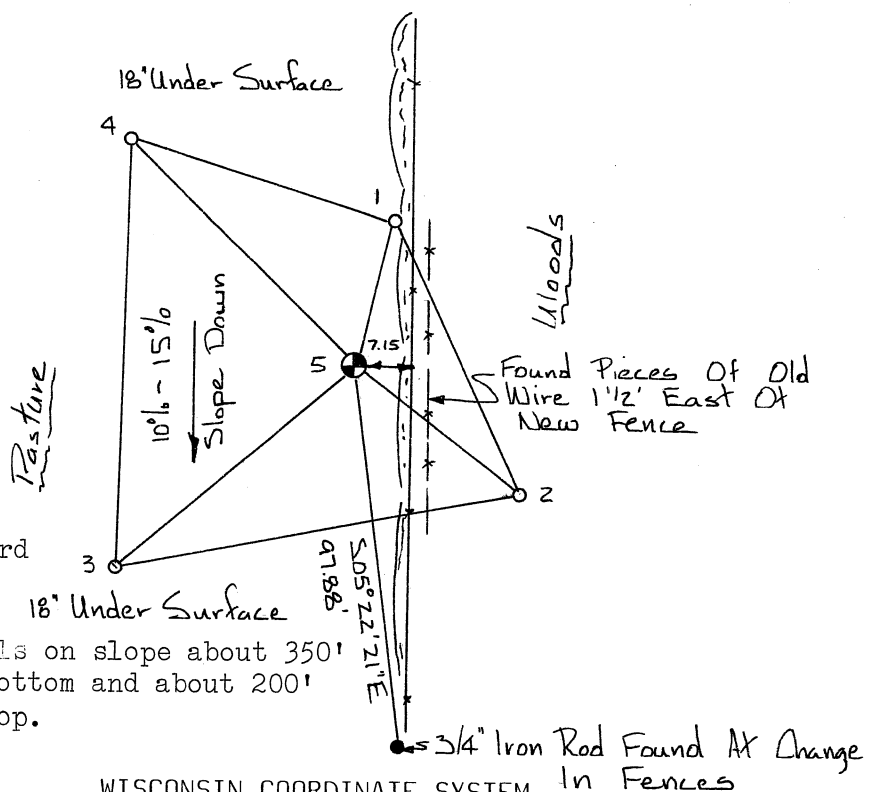
3-4= N00°25'34"E 110.33'

4-1= S73°55'03"E 72.03'

North lip of sign 1.18' East  
 Bearings are True

○ Denotes 1" X 36' iron rod with a Crawford County witness corner cap set

Sketch:



Corner falls on slope about 350' North of bottom and about 200' South of top.

SURVEY CONTROL ORDER

Horizontal	3rd
Vertical	

WISCONSIN COORDINATE SYSTEM

Corner	East(X)	North(Y)	Elevation(Z)	Zone
Control Sta. Name	1737669.327	388370.834		